



The National Science Foundation IGERT Program

GEEMaP is funded by the National Science Foundation's Integrative Graduate Education and Research Traineeship (IGERT) initiative. The stated purpose of the IGERT program is "to meet the challenges of educating US PhD scientists, engineers, and educators with the interdisciplinary backgrounds, deep knowledge in chosen disciplines, and technical, professional, and personal skills to become in their own careers the leaders and creative agents for change."

- ▶ All NSF Directorates – from Computer and Information Science and Engineering to Polar Programs – are involved in IGERT.
- ▶ The IGERT initiative began in 1997.
- ▶ There now are over 120 funded IGERT programs at universities throughout the country.
- ▶ GEEMaP is the only IGERT program at The University of Iowa.



Questions?

Contact Eileen Beran, Program Coordinator
319.335.0712 or eileen-beran@uiowa.edu

GEEMaP Faculty Principal Investigators

Kate Cowles, Statistics
kate-cowles@uiowa.edu

David Bennett, Geography
david-bennett@uiowa.edu

Andrew Kusiak, Industrial Engineering
andrew-kusiak@uiowa.edu

Alberto Segre, Computer Science
alberto-segre@uiowa.edu

Kathleen Stewart, Geography
kathleen-stewart@uiowa.edu

GEEMaP unites 18 faculty members from seven departments in three colleges, combining expertise in wind energy, water resources, flood control, geographic information science, spatial statistics, computer science, and more.

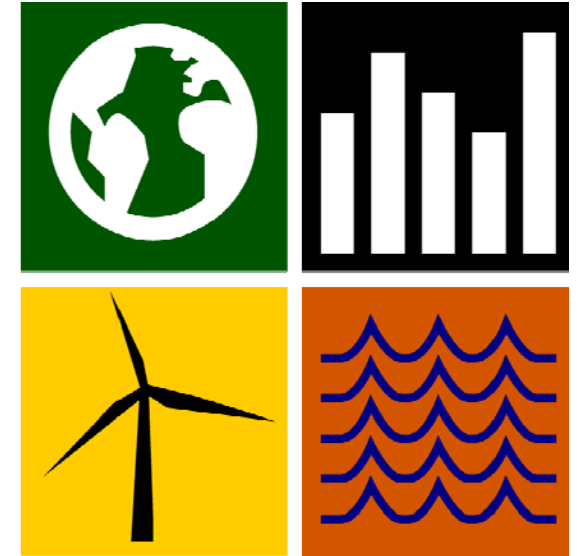


GEEMaP

The University of Iowa
241 Schaeffer Hall, Iowa City, IA 52242
Phone: 319.335.0712; Fax: 319.335.3017
e-mail: GEEMaP@uiowa.edu
Website: geemap.stat.uiowa.edu



THE UNIVERSITY
OF IOWA



GEEMaP

An IGERT Program in*

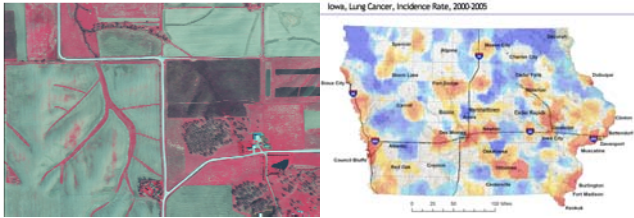
**Geoinformatics for
Environmental and Energy
Modeling and Prediction**

**Integrative Graduate and Research Traineeship*



National Science
Foundation

What is Geoinformatics?



Geoinformatics is the science of measuring, storing, managing, analyzing, and visualizing phenomena occurring on or near the earth's surface. It includes geographic information science, spatial statistics, and high-performance computing.

The **GEEMaP program** will equip PhD students with not only technical know-how, scientific understanding, and hands-on experience, but also communication skills and intercultural perspectives.

While earning PhDs from their own departments, GEEMaP students will broaden and deepen their knowledge through shared activities:

- Additional coursework leading to the Graduate Certificate in Geoinformatics
- Participation in a special interdisciplinary Geoinformatics seminar
- Participation in interdisciplinary research groups led by GEEMaP faculty
- Involvement in internships with industry and government agencies
- Participation in the annual GEEMaP research and technology workshop
- Involvement in community-building activities with quantitative science and engineering students and faculty campus-wide



— HOW TO APPLY —

FIRST:

⇒ Apply for admission directly to the department from which you wish to receive your PhD. Participating departments:

- Biostatistics**
- Civil & Environmental Engineering**
- Computer Science**
- Geography**
- Geoinformatics***
- Industrial Engineering**
- Statistics**

**New program—check for status*

Make certain to observe all of the individual departments' application requirements and deadlines.

⇒ Inform the department that you are also applying to the GEEMaP IGERT.

NEXT:

⇒ Apply for admission to GEEMaP by completing and forwarding the following:

- GEEMaP application (found on our website @geemap.stat.uiowa.edu)
- Statement of purpose
- Three letters of reference (must be sent directly by the writer)

E-mail your application and supporting documents to GEEMaP@uiowa.edu

— DEADLINES —

- **Trainee Applications for GEEMaP:**
Due February 1 prior to fall enrollment
- **Associate Applications for GEEMaP:**
Due April 15 prior to fall enrollment



ELIGIBILITY

	Eligibility	Funding
GEEMaP Trainees	US citizens and permanent residents only	For first 2 years of graduate study: NSF stipend of \$30,000/year plus paid tuition and fees. Eligible for departmental, university, and grant funding thereafter.
GEEMaP Associates	No citizenship requirements	May apply for departmental, university, and grant funding.

Eligibility Requirements for all GEEMaP Trainees and Associates Include:

- ⇒ US bachelor's degree from a regionally accredited American college or university, or an equivalent degree from another country as determined by the Office of Admissions.
- ⇒ A passionate interest in environmental and energy-related issues as well as in cutting-edge computational methods.

Women and underrepresented minorities are encouraged to apply to the GEEMaP program